

## The Fastest Splitter for Concrete Blocks Manufacturers



**2.5 times**  
faster than  
HYDRAULIC  
SPLITTERS



### **On board: Split directly on the production board**

No more need to move blocks onto secondary equipment.  
**In one fast simultaneous cycle, blocks are split directly on the production board.**

### **In-line: Installs directly over your existing conveyor**

Drop the Split-Impact over your existing conveyor and start producing.

With a Split-Impact installed before your palletizer, you get fully integrated, fully automated production using existing equipment saving you floor space and production time!

**Staying in-line and on board requires no additional manipulation thus enabling smooth and uninterrupted production flow. Moreover it increases productivity and reduces costs.**

### **Fastest cycle time: Speed up your production flow by adding the Split-Impact in your line**

Regardless of the numbers of splits needed per board the Split-Impact will split instantly within **a single cycle time a complete board in 4 to 10 seconds.** (Depending of the sequencing)

### **Adaptable and expandable to your production needs**

Each Split-Impact system is designed for flexibility and independence. **PLC control permits each head to be profiled perfectly to the production requirement.** If a new mould design requires more splits: additional heads can be added in minutes!

## Additional benefits

- Delivers ready to tumble products
- No extra handling required
- No bottom knife needed
- No messy hydraulics

### Standard features

- Up to 35 BHS heads can be incorporated into the Standard Frame
- Safety guards
- Ruler gauges for head positioning
- Manual height adjustment mechanism provides up to 20" (508mm) of clearance to the production board.
- Easy accessibility for maintenance
- Quick setup and adjustment
- Runs on plant air supply

### Exceptional performance heads

**NEW**

- **Corner blocks capability:** the head's knife can be rotated 90 degrees to accommodate different orientations and types of splits

- Heads come fully equipped and ready to hook to the existing support racks
- Racks are also fully equipped to accommodate up to 5 heads
- Each head has a split detection and control unit

### Replace your blades instantly without any tools

- The unique *Lift and Twist System* blades mechanism facilitates blade replacement without the need for tools
- Different blades lengths and shapes are available

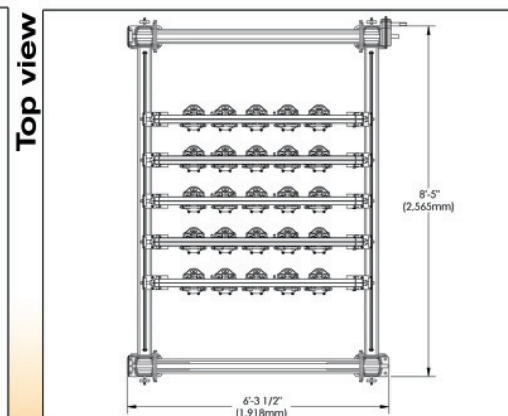
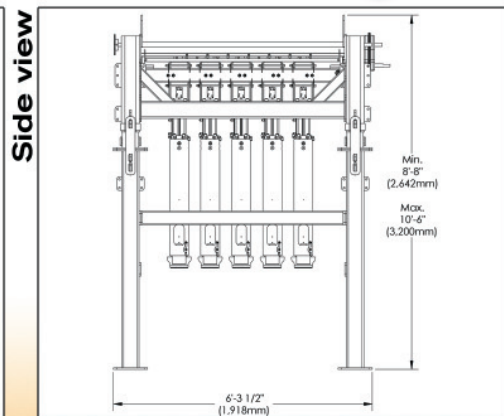
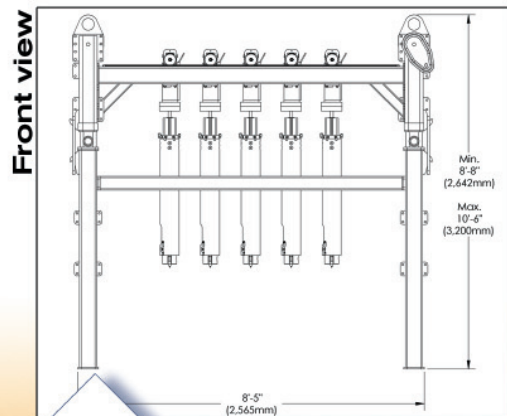
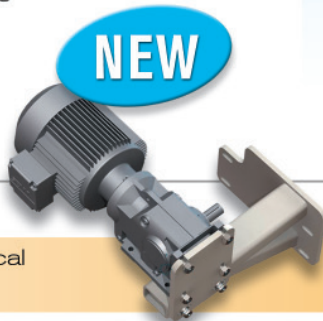
### Quick and easy setup

- Plug and play setup with the quick connect control cables
- Heads are pre-programmed in the control panel, no programmer needed
- All options attachments are already included for the addition of future heads

## Optional Enhancements

### Motorised frame lifter

- Replacing the manual height adjustment with the electrical height adjuster, will optimize your setup time.



\*Adjustable to your conveyor

## Specifications

### Frame Size\*\*

Width: 8' 5" (2,565.4mm)  
Length: 6' 3-1/2" (1,918mm)  
Maximum Height: 10' 6" (3,200mm)  
Minimum Height: 8' 8" (2,642mm)

### Frame Capacity

1 to 35 BHS heads

### Frame Weight

900 kg (1,984lbs)

### Controls

Siemens AS/INTERFACE or  
Allan Bradley

### Energy Requirements

Plant Air pressure required - 100 psi  
Electricity required - 110 to 240 VAC

### Blocks Size

Height: Up to 6" (152.4mm)  
20" (508mm) high clearance

### BHS Head Size

Height: 5' 1" (1,549.4mm)  
Width : 6-11/16" (170mm)  
Length : 6-11/16" (170mm)

### Head Weight

51 kg (112.5lbs)

\*The **Compact frame** is also available for limited floor space.

Width: 6' 5" (1,955.8mm)  
Length: 5' 7-1/2" (1,714.5mm)  
Maximum Height: 10' 6" (3,200mm)  
Minimum Height: 8' 8" (2,642mm)

†Dimensions are subject to change